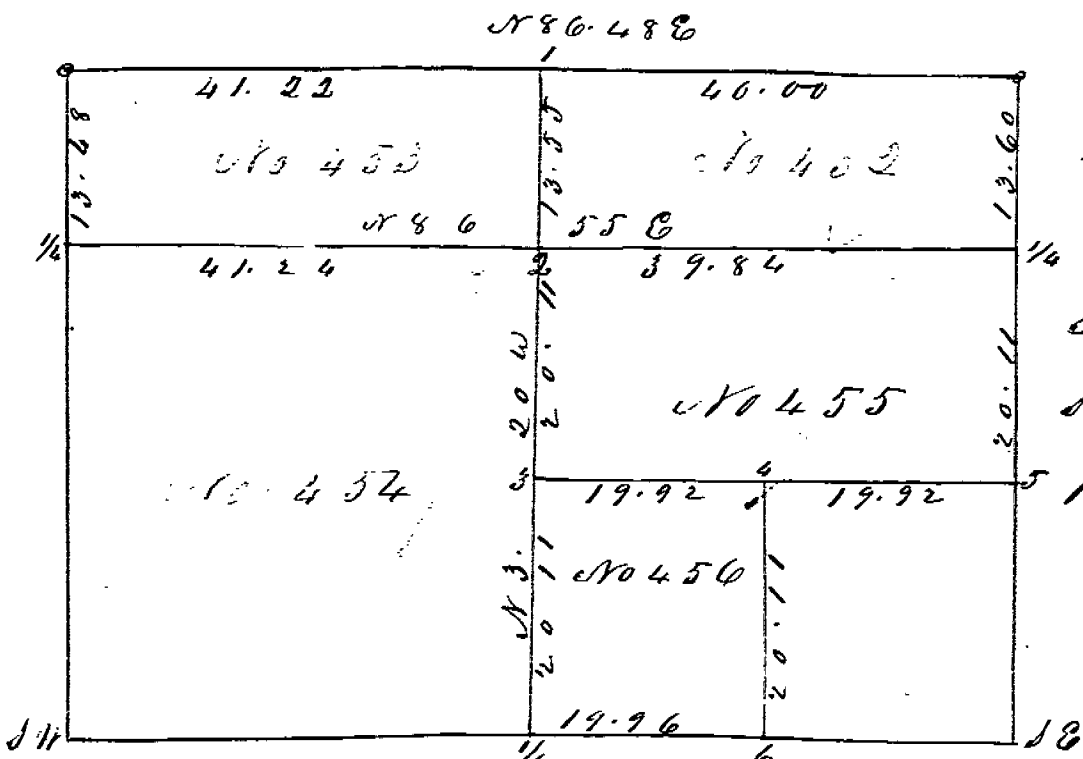


Vol. 1 pg. 80

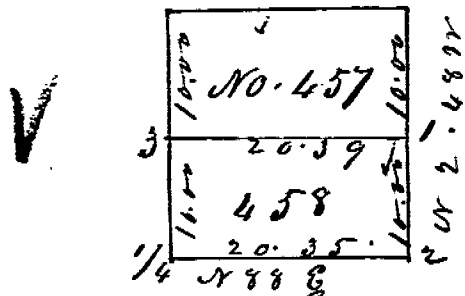
TYMOCHTEE
31-1-14

TAX MAP COPY



South fraction
 Se 31. 1/2. 1/2 14 E
 Range 40 T. 25

No. 452 to 455. Jonathan Kear.
 No 453. Peter & Brown. No 454. to 456. Smith Kentfield
 Act. 1. An Oak 36m S 13 E 310 W oak 36m S 16 1/2 E 339
 2 Oak oak 3m N 32 W 12m Oak oak 3m S 84 E 25
 3 W oak 3m N 10 1/4 W 19 1/2 W oak 14m S 85 1/2 E 27 1/4
 4 Oak oak 4m N 27 W 40 1/2 J. oak 3m S 65 W 61
 5 W oak 14m N 69 1/2 W 61. Hickory 13m N 31 1/4 W 78 1/2
 6 W ash 11m S 39 1/2 W 60 W oak 30m S 42 E 79 1/2



S $91\frac{1}{4}$ N $91\frac{1}{4}$ Sec 2. T. 2. S. R. 13 E.

Surveyed Febry 28. 1848

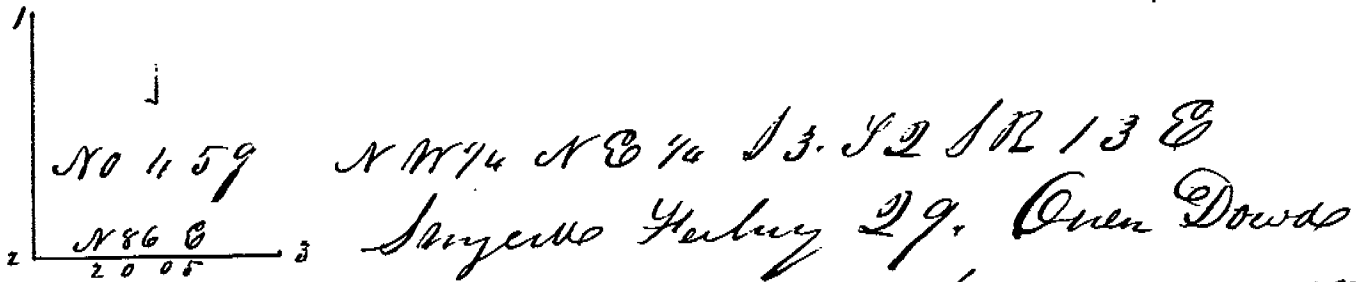
No 457. James Brink 458 William Sommers

At. 1. W. oak 40 in S $40\frac{1}{2}$ W 29 Hickory 10 in N $32\frac{1}{2}$ W 47

2. W. oak 10 in S 61 W $25\frac{1}{2}$ New oak 12 in N $31\frac{1}{2}$ E $80\frac{1}{2}$

3. Hickory 6 in N $27\frac{1}{2}$ E $30\frac{1}{2}$ Hickory 2 in S 88 E $32\frac{1}{2}$

TAX MAP COPY



- at 1. Reed oak 36" N 55 1/2 E 61. Wood 12" N 84 W 38 1/2
- 2 Elm 13" S 31 1/4 W 46 Reed oak 36" S 61 E 76
- 3 Maple 10" N 35 E 29 1/2 Hickory 14" S 80 1/2 E 33